

CT-S300

Japan CBM Corporation is actively meeting the need for thermal printers in all parts of the world, led by printers for POS, ECR, and kiosk applications. With such benefits as quiet operation, high-speed printing, and excellent high-density barcode printing, thermal printers are idea for many applications, and CBM printers are among the leaders in the field.

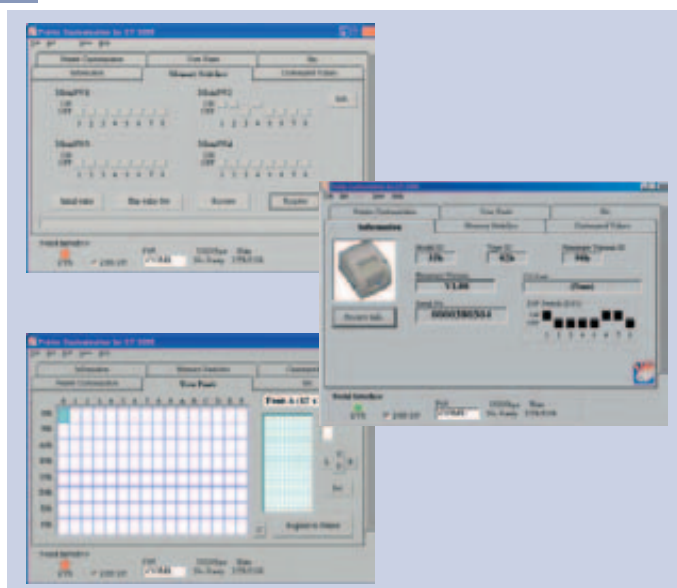


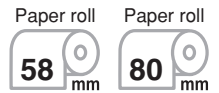
Standard type
(External AC adapter)



Built-in AC adapter type

Customization software for easy customization



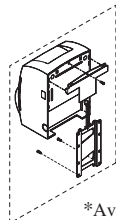


Available in black
(Built-in AC adapter type)



Vertical solution

Wall mount kit



WALL-CTS300

*Available for external AC adapter type only.

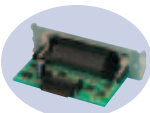
Features

- 100mm/sec. high speed
- Smallest size in its class
- Paper-drop-in style
- User-installable interface cards
- 80 or 58mm paper width
- Two-color printing
- Easy customization by software
- Bitmap data registration
- Barcode printing
- ESC/POS* compatibility
- Cash drawer kick-out
- Hardware buzzer incorporated
- Smoothing font

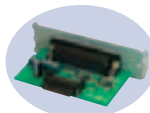
Applications

- Receipt
- Coupon
- Ticket
- Daily report
- Kitchen
- Delivery slip
- Barcode

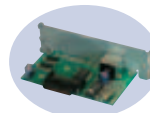
Interface cards



Parallel



Serial



USB

Splash proof cover

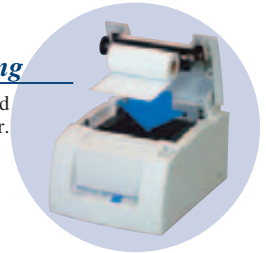


SPROOF-CTS300

*Available for built-in AC adapter type only.

Easy paper loading

Just drop paper in and close the top cover.



Specifications

Model	CT-S300
Printing method	Line thermal dot printing
Printing width	80mm paper: 72mm/576 dots 58mm paper: 48mm/384 dots
Dot pitch	8 × 8 dots/mm (203 dpi × 203 dpi)
Printing speed	Max. 100mm/sec. (23.6 lines/sec.)
Number of columns	80mm paper: Font A-48/42 columns Font B-64/56 columns Font C-72/63 columns 58mm paper: Font A-32/30 columns Font B-42/40 columns Font C-48/45 columns
Character size (W × H)	Font A: 1.25 × 3.00mm (12 × 24 dots) / Font B: 0.88 × 2.13mm (9 × 17 dots) Font C: 0.88 × 2.00mm (8 × 16 dots)
Character table	Code page 437, 850, 852, 857, 858, 860, 863, 864, 865, 866, Katakana, WPC1252, Thai code 18
Barcode type	UPC-A/E, JAN-13/8, ITF, Code 39, Code 128, CODABAR, Code 93
Line spacing	4.23mm (1/6 inch); can be set by a command.
Paper	Thermal paper roll, 80 or 58mm (W) × ø83mm
Interface	Parallel: IEEE 1284 and Centronics compliant, Serial (RS-232C), or USB
Input buffer	4K bytes / 45 bytes
NV user memory	256K bytes
Drawer kick-out	2 Drawers
Power supply	DC 24V ± 7%
AC adapter	Input: AC 100-230V, 50/60 Hz, 120VA Output: DC 24V, 2A
Weight	Approx. 1.2kg
Dimensions (W × D × H)	145 × 195 × 121mm
Operating environment	5 ~ 40°C, 35 ~ 85% RH
Storage environment	-20 ~ 60°C, 10 ~ 90% RH
Reliability	Thermal head: 100,000,000 pulses or 100km Auto cutter: 1,000,000 cuts
EMC and safety standards	UL, C-UL, FCC Class A, TUV-GS, CE marking

* ESC/POS is a trademark of Seiko Epson Corporation.

Type classification

CT-S300 R F 230 S M1
(1) (2) (3) (4) (5) (6)

- (1) Model type
CT-S300
- (2) Interface
P: Parallel
R: Serial RS-232C
U: USB
- (3) Character set
F: International
- (4) Power source
100: AC 100V
120: AC 120V
230: AC 230V
- (5) Power supply
S: Built-in AC adapter
A: External AC adapter
D: No AC adapter
- (6) Blackmark sensor (Option)
None: No sensor
M1: Left side
M2: Right side